

MONTHLY MEMBERSHIP PROGRESS REPORT

LOCATION IOWA

District 9 NE

Results as of: 4/30/2021

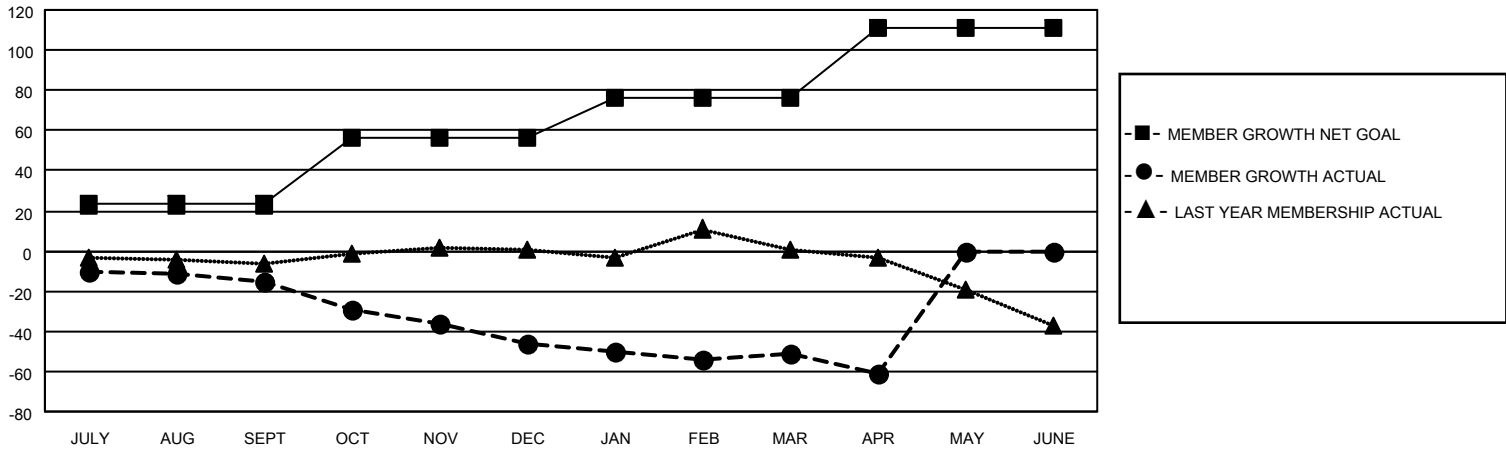
Clubs			
RESULTS FOR 2020-2021			
QUARTER	NEW CLUB GOAL	NEW CLUBS	DROPPED CLUBS
JULY/AUG/SEPT	0	0	0
OCT/NOV/DEC	1	0	0
JAN/FEB/MAR	0	0	1
APR/MAY/JUNE	1	0	0

Members			
RESULTS FOR 2020-2021			
QUARTER	MEMBER GROWTH NET GOAL	MEMBER GROWTH ACTUAL	DROPPED MEMBERS ACTUAL (including transfers)
JULY/AUG/SEPT	23	24	39
OCT/NOV/DEC	33	17	46
JAN/FEB/MAR	20	20	23
APR/MAY/JUNE	35	6	15

GOALS AND ACTUAL NEW CLUBS CUMULATIVE



GOALS AND ACTUAL MEMBERS CUMULATIVE



DROPPED CLUBS: 1

22 CLUBS OF 46 ADDED 1 OR MORE NEW MEMBERS

GENDER DISTRIBUTION

MALE 994 (77.60%)
FEMALE 287 (22.40%)

DROPPED MEMBERS

[CLICK HERE FOR CUMULATIVE MEMBERSHIP DATA](#)

DECEASED	15
CLUB CANCELLED	0
OTHER	108
TOTAL	123

TOTAL FAMILY UNIT MEMBERS	155
FAMILY MEMBERS PAYING HALF DUES	78